



# BRIMINGTON

A HOME FROM HOME IN CHESTERFIELD

## Welcome to Brimington


### *Come 'Home to Brimington'*


Located in a quiet village on the outskirts of the large market town of Chesterfield, Brimington Care Home is a purpose-built care home. Brimington offers 42 rooms (some of which can be shared if desired), all tastefully decorated and many benefitting from en-suite facilities.

If you would like to enquire further or are interested in viewing our beautiful residential care facility please call or email.



Claire Bates  
Home Manager  
73 - 77 Manor Road  
Brimington  
Chesterfield, S43 1NN

 01246 559 777

 [enquiries@aurem-care.com](mailto:enquiries@aurem-care.com)

## Life at Brimington

Brimington is a medium sized home caring for clients with, dementia, residential, respite and nursing needs. Our aim is to enhance the quality of life in our home wherever we can with our activities programme and trips to local destinations. Residents love regular events within the home too – from entertainment to school visits and arts and crafts, there's always lots to do. When the weather's good, the garden offers residents the opportunity to get involved in gardening - a very popular pastime in the home.

### Outstanding Care

Our experienced and dedicated team are passionate about delivering exceptional care to our residents and their loved ones. We have created something special at Brimington, a space where people can thrive with personalised, dedicated care and support.

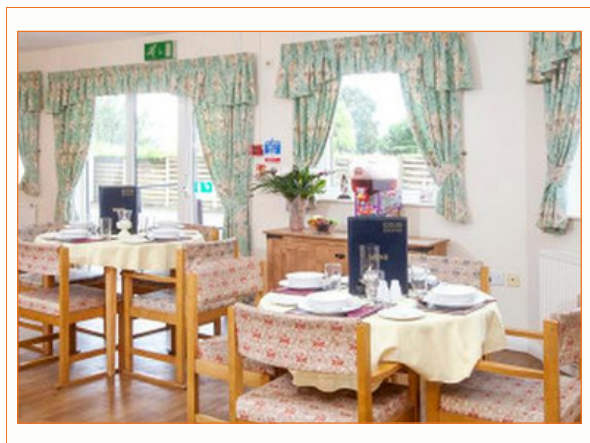


### Brimington - your home from home

Within safe and inviting surroundings, our highly skilled team create personalised care plans in conjunction with residents and their loved ones, placing residents' wellbeing, personal choice, and independence at the front of mind. It's important that life continues to blossom for our residents and through first class care, new friendships and special memories made in abundance – we know residents will love their new way of living.



## Facilities

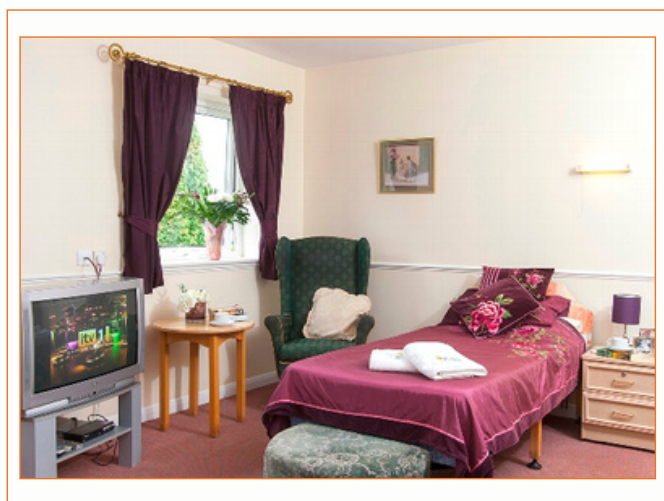


As well as making the most of all seasonal celebrations, we enjoy regular visits from local nursery and primary school pupils, weekly bingo and Feelgood Friday sessions plus everything from light exercise and coffee mornings to singing and dancing.

Our residents enjoy making the most of the sunshine and fresh air in our beautiful landscaped gardens and patio area. For the green fingered amongst us, enjoying some gardening is a popular and stimulating activity.



## Our rooms



At Brimington we offer a fantastic menu to cater for all dietary requirements and going for coffee with friends is made easy in our bistro bar and café. Nestled in a cosy corner of our home, you can enjoy some light refreshments while reading a book or sifting through one of the newspapers or magazines available.

## Wellbeing

We offer an extensive 'Wellbeing' programme of activity, entertainment and events – our residents can get the most out of every day. With quizzes, discussions, music, exercise, gardening, garden parties and excursions, there is much to enjoy! We welcome visits from family, friends and the many members of our wider community – no need to book, just come on in, the kettle's always on.

## Funding your care

We welcome both self-funding residents and those supported by the local authority. If you are a local authority-funded resident and need to pay a top-up fee to cover our weekly fee, the local authority will be responsible for paying us the full cost of care while collecting the top-up directly from you.

## Our Fees

Our fees will vary depending on needs and customer preferences which will be assessed prior to any offer of fees. We then determine the level of care needed to provide the very best possible care.

## What's included?

- All care and support including a monthly review of care plans
- All meals, snacks and drinks freshly prepared every day by our chef
- Homemade cakes, and a variety of drinks
- Access to landscaped gardens
- Activities and lifestyle programme
- All utilities and other accommodation costs
- Housekeeping and laundry services
- WiFi internet access

## What's next?

If you are interested in you or a loved one coming to join our community at Brimington, please give us a call or email us. We would love to meet you and would be proud to show you around the house.



Claire Bates - Home Manager

73 – 77 Manor Road

Brimington

Chesterfield, S43 1NN



01246 559 777



[enquiries@aurem-care.com](mailto:enquiries@aurem-care.com)